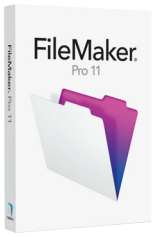




# A PRODUCT LINE OVERVIEW

## For those new to FileMaker software



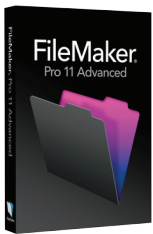
### FileMaker Pro 11

**What is it:** FileMaker Pro 11 is the newest version of the leading easy-to-use database software for Mac, Windows, and the web.

**Who uses it:** Individuals, businesses, non-profit organizations, educational institutions, and corporate workgroups.

**What is it used for:** FileMaker Pro 11 helps you and your team get any task done faster. Build a custom solution or use one of more than 30 Starter Solutions included in the product to help you with:

|                    |                   |                  |
|--------------------|-------------------|------------------|
| Contact Management | Invoices          | Document Library |
| Inventory          | Email Campaigns   | Asset Management |
| To Do List         | People Management | Time Billing     |



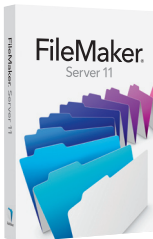
### FileMaker Pro 11 Advanced

**What is it:** FileMaker Pro 11 Advanced includes all the features of FileMaker Pro 11 plus a suite of advanced development and customization tools.

**Who uses it:** People who want more tools to help them design and maintain customized databases for themselves or their team.

**What it is used for:** FileMaker Pro 11 Advanced is used to build more powerful and customized databases faster with ease:

- **Design and develop databases faster and easier** with Custom Menus, Custom Functions, and more.
- **Monitor more efficiently** using the interactive Script Debugger and powerful Data Viewer.
- **Modify and maintain databases** with ease using the advanced Database Design Report and Multiple Table Import.



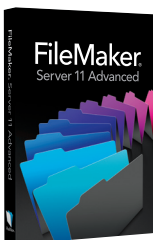
### FileMaker Server 11

**What is it:** FileMaker Server 11 is the newest version of the fast, reliable, easy-to-use server software for groups of FileMaker Pro users that lets you securely share your databases over a network, or on the web.

**What does it do:** FileMaker Server 11 lets you share your databases with unrivaled availability, security, and performance.

**When should you use it:** When you want secure, reliable sharing or you have more than 9 FileMaker Pro users. FileMaker Server 11 allows up to 250 FileMaker Pro clients to access the same database simultaneously.

- **Easy installation and administration** – Basic installations take just 20 minutes or less. Manage your databases remotely.
- **24/7 reliability and availability** – Get anytime access to your data with 24/7 availability.
- **Industry-standard security** – Authentication via Active Directory/Open Directory and use SSL encryption for secure data transfer.
- **Custom Web Publishing** – Create custom, data-driven websites using PHP and the PHP Site Assistant.



### FileMaker Server 11 Advanced

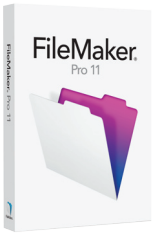
**What is it:** FileMaker Server 11 Advanced includes all the features of FileMaker Server 11 plus extended sharing capabilities.

**What does it do:** Whether over a network or on the web, FileMaker Server 11 Advanced maximizes your database sharing and connectivity capabilities, easily and securely.

- **Sharing** – FileMaker Server 11 Advanced technology does not limit the number of FileMaker Pro clients. Technical limits are imposed only by your hardware and operating system.
- **Administrator Groups** – Assign specific server access privileges while retaining exclusive control of your databases.
- **Instant Web Publishing** – Easily publish and share databases over the web with up to 100 concurrent web users.
- **ODBC/JDBC Support** – Share data with other applications via server-based ODBC/JDBC support.

\* Note performance may vary based on database architecture and complexity.

\*\* FileMaker Server 11 Advanced supports up to 100 simultaneous Instant Web Publishing users versus a maximum of 5 simultaneous web users with a FileMaker Pro client.



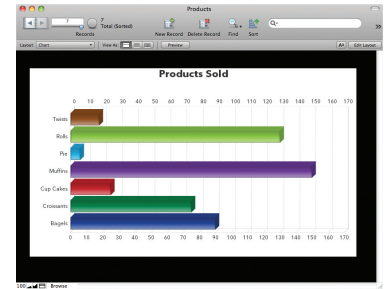
# WHAT'S NEW

## For those familiar with FileMaker software

### Top New Features in FileMaker Pro 11 and FileMaker Pro 11 Advanced

Get innovative new features to help you create eye-catching reports, boost your productivity, and build better databases.

- **New! FileMaker Charts** – Create eye-catching reports using bar, line, area, and pie charts.
- **New! Quick Reports** – Create reports in a spreadsheet-like format. Group and summarize data on the fly.
- **New! Recurring Import** – Automatically import Excel and text files every time you open your database.
- **New! Quick Find** – Search for information just as you would in a web browser.
- **New! Inspector** – Manage your layout tools all in one convenient place.
- **New! Layout Folders** – Organize layouts into folders with easy drag and drop.



#### New in FileMaker Pro 11 Advanced

- **New! Enhanced Custom Menu User Interface** – Use a streamlined new interface to customize menus for executing your scripts.
- **New! Custom Function Enhancements** – Copy, paste, and import custom functions into your databases without having to re-key information.
- **New! Improved Script Debugger** – Debug scripts attached to buttons and Custom Menus along with all the scripts on your layout.

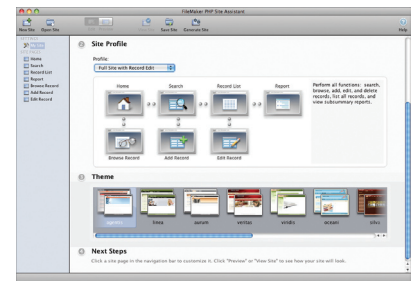
Learn more:

[www.filemaker.com/products/fmp/features.html](http://www.filemaker.com/products/fmp/features.html)

### Top New Features in FileMaker Server 11 and FileMaker Server 11 Advanced

Get new features to maintain and monitor databases with ease, improve scripting flexibility, and expanded sharing capabilities.

- **New! Enhanced Statistics View** – Get detailed visibility into every FileMaker Pro client on the server to help diagnose potential issues.
- **New! Backup File Clone** – Save an empty version of your database to help preserve the schema and architecture of your file while troubleshooting your database.
- **New! Save or Load Schedules** – Automatically save and load your server schedules when migrating to new hardware.
- **New! Specify User Accounts** – Get the access privileges you need by selecting a specific user account to run system-level scripts.
- **New! Script Time Limits** – Set optional time limits for script schedules to keep your databases running more efficiently.



#### New in FileMaker Server 11 Advanced

- **New! Sharing Capability** – FileMaker Server 11 Advanced technology does not limit the number of FileMaker Pro clients. Technical limits are imposed only by your hardware and operating system.
- **New! Administrator Groups** – Create Administrator Groups and assign specific administrative tasks while retaining exclusive control of your server.

Learn more:

[www.filemaker.com/products/fms/features.html](http://www.filemaker.com/products/fms/features.html)

#### Minimum Requirements

**Windows 7 Ultimate, Professional, Home Premium**† 1 GHz or faster, 1 GB RAM, DirectX 9 graphics device with WDDM 1.0 or higher driver, DVD drive

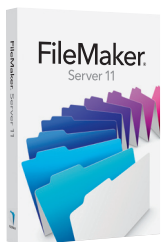
**Windows Vista Ultimate, Business, Home Premium (Service Pack 2)**† 1 GHz or faster, 1 GB of RAM, 1024x768 or higher resolution video adapter and display, DVD drive

**Windows XP Professional, Home Edition (Service Pack 3)**† Pentium III 700MHz or faster, 256 MB of RAM, 1024x768 or higher resolution video adapter and display, DVD drive

**Mac OS X v10.6**† Intel-based Mac, 1 GB of RAM, DVD drive

**Mac OS X 10.5.7**† PowerPC G4 (867MHz+), Power PC G5, Intel-based Mac, 512 MB of RAM, DVD drive

For detailed technical specifications, visit: [www.filemaker.com/protechspecs](http://www.filemaker.com/protechspecs)



#### Minimum Requirements

**Windows**†  
Windows Server 2008 R2  
Windows 7 Professional Edition  
Windows Server 2008 Standard Edition SP2  
Windows Server 2003 Standard Edition SP2

**Mac**†  
Mac OS X 10.6 or 10.5.8 (Intel-based Mac)  
Mac OS X Server 10.6 or 10.5.8 (Intel-based Mac)

For detailed technical specifications, visit: [www.filemaker.com/servertechspecs](http://www.filemaker.com/servertechspecs)

† Versions stated are the minimum requirement. The software may also work with later versions certified by FileMaker, Inc.